

Improving lives together

# Low Secure Mental Health Service for Men

Litchurch Ward,  
Cygnet Hospital Derby, Derbyshire

Good

**Cygnet**  
Health Care

Accepting  
Referrals

Litchurch Ward is our male low secure service and can support up to 15 men who have mental health or dual/multiple diagnosis needs.

Our service supports men who may be stepping down from medium secure placements, including those who present an ongoing risk to themselves or others. We also take referrals from PICU and Acute wards. We work collaboratively with service users and external professionals to support individuals who find it challenging to engage with treatment, and may have dual diagnosis including personality disorders.

Litchurch Ward benefits from on-site step down options including Wyvern Ward, which delivers community-focused rehabilitation, allowing for positive risk taking and relapse prevention work. Our highly-skilled Multidisciplinary team (MDT) deliver a variety of treatment and therapy options based on each individuals needs.



Male



18+ years



15 beds



## Our service user profile:

- > Men, aged 18+ years
- > Primary diagnosis of mental illness
- > Detained under the Mental Health Act, including Ministry of Justice restrictions
- > Requiring assessment and treatment in a secure environment
- > May have a history of trauma

## Prison Transfer Programme

We also offer a specialised three month prison transfer programme, for stabilisation and assessment of prisoners whose mental health needs cannot be met in the prison environment.

- > Referrals and assessment: We provide a rapid response to referrals, assessment within the prison environment, quick decision on suitability for transfer within five working days and liaison with MOJ over transfer warrants
- > Comprehensive inpatient assessment: Twelve week assessment programme including full diagnostic and risk formulations, IQ and neurological assessments, stabilisation, treatment plan



## Psychology

We have a dedicated team of forensic, clinical and assistant psychologist who offer therapies including;

- > Dialectical Behaviour Therapy (DBT)
- > Schema Therapy
- > Psychodynamic Psychotherapy
- > Cognitive Behavioural Therapy (CBT)
- > Trauma work



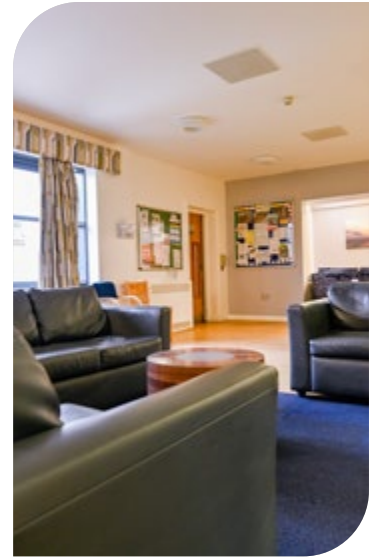
Click Here to Read  
Fred's Story of  
**Recovery on  
Litchurch Ward**



**Social Hub** on  
site co-produced  
with service users



**Strong links**  
with family,  
friends and  
carers with  
regular events



**100%**

of those discharged in 2024  
stepped down on their  
care pathway



**Good**

Rated **Good** in all  
domains by the CQC



"I've been all over the country with my son in different hospitals and this is the best one. The team here have the same goals as me and my son and I trust the team."  
- Parent

"He's made a huge improvement at Cygnets Hospital Derby." - Parent

**Our facilities:**

- > En-suite bedrooms
- > External secure courtyard
- > Fully equipped gym
- > Art room at the Recovery College
- > IT suite
- > Therapy kitchen
- > Sensory room
- > Multi-faith room
- > Variety of activity & games rooms
- > Garden with outdoor seating
- > Lounge & dining rooms

**Make a referral**

- 1 Referral made to your **regional NHS Partnerships Manager** or 0808 164 4450 / [chcl.referrals@nhs.net](mailto:chcl.referrals@nhs.net)
- 2 Assessment arranged and undertaken via our management team
- 3 Feedback provided on whether our service can meet the individual's needs
- 4 Assessment pack formulated including care plans and funding information
- 5 Admission agreed and plans for transition arranged with referring team following confirmation of acceptance of placement

**Where are we?**

**Cygnets Hospital Derby**  
100 City Gate, London Road, Derby,  
Derbyshire, East Midlands DE24 8WZ  
**Phone number**  
01332 365 434



CYG-955 | Date of Preparation: 13/12/24

Please visit [cygnetsgroup.com](http://cygnetsgroup.com) for more info | Follow us on social media:

**Integrity**

**Trust**

**Empower**

**Respect**

**Care**