

Improving lives together

Specialist residential service for adults with autism and learning disabilities

Good

Placements available
Now taking referrals

Amberwood Lodge is a specialist residential service for adults with autism and learning disabilities, who may have behaviours that challenge. We aim to provide a safe, comfortable and effective environment, promoting independence and community integration. Person-centred planning is at the heart of everything we do, based on each person's specific needs. We understand that consistency and continuity of care is important for the individuals we care for.



Mixed gender



18+ years



9 Beds



Our resident profile:

- > Adults from the age of 18 years
- > Individuals with a diagnosis of autism and learning disability
- > May present with behaviours that challenge
- > May have communication challenges
- > May have associated complex needs
- > May have an ECHP (Education Healthcare Plan)
- > May be subjected to DoLS (Deprivation of Liberty Safeguards) or Care Orders

The service at a glance

Based just a 10 minute drive from the seaside, Amberwood Lodge is a beautiful building providing specialist support for nine individuals. Within the service we have a large communal lounge, a sensory room, an IT and activity room and two kitchens; one large homely kitchen that individuals use independently to make drinks and snacks for themselves and their visitors, as well as a second kitchen where residents assist the cook to prepare meals and plan menus for the week. Additionally we have a lovely spacious garden with an abundance of outdoor activities, including a lovely summerhouse.

As part of our care pathway, our service enables individuals to build upon their skills to achieve further independence, self-advocacy and confidence, leading to better quality of life. Residents can gain skills through extended learning on a number of accredited platforms.

Interventions are matched according to residents' needs and our life skills development programmes are overseen by our activity coordinators.

The integrated MDT consists of occupational therapy, speech and language therapy, psychology and psychiatry. The team works together to support the development of daily living skills and reduction in maladaptive behaviours.

Our staff use least restrictive practice approaches and are trained in specialist safety intervention techniques and sensory integration strategies.

Our community links:

- > Local high street shops
- > Close to the New Forest
- > Harvester Restaurant
- > Farmer Palmers Farm
- > Durlston Country Park
- > Monkey World
- > Leisure centres
- > Local beaches
- > Superbowl
- > Moors Valley Country Park

Rated **'Good'** with the CQC



0% agency usage for 5 years



International days each month the residents pick a new country, **decorate the house** and are supported to cook food from that country



Consistently **100%** of individuals achieve over 25 hours of activities each week



Homely environment



On-site multi-disciplinary team consisting of occupational therapy, speech and language therapy, psychology and psychiatry



On-site sensory room



Spacious gardens with outdoor activities and a garden house



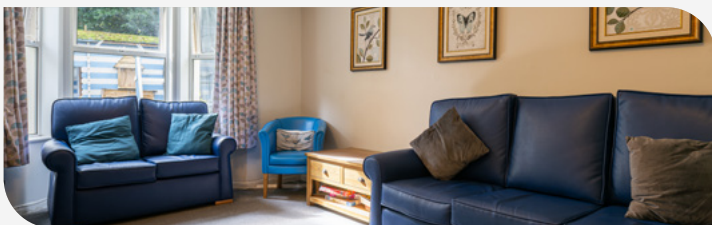
Close to the beach



Well-being sessions with psychologist (including drop-in session for staff)



Monthly house meetings including 'you said, we did'



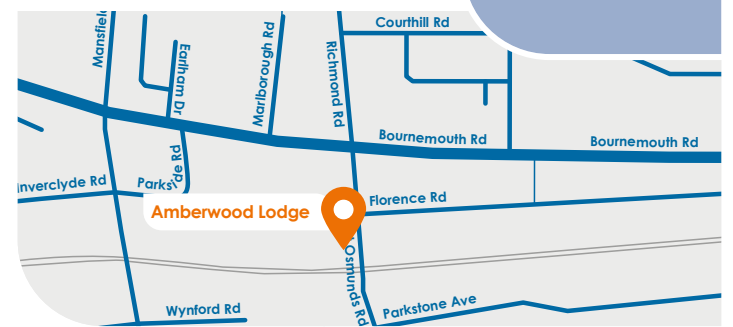
For more information or to make a referral, please contact your regional Business Relationship Manager or email: sc.referrals@cygnethealth.co.uk

- 1 Referral made to Cygnet Social Care and a desktop assessment is undertaken to review suitability for placement
- 2 If a suitable placement is identified, an assessment is arranged and undertaken by our specialist team
- 3 Feedback is provided on whether our service can meet the individual's needs
- 4 Detailed placement proposal is formulated to include care plans and funding information
- 5 Once placement is confirmed, transition plans are developed with all relevant stakeholders and admission date is agreed

Where are we?

Amberwood Lodge
6 St Osmonds Road, Parkstone, Poole, Dorset BH14 9JN

Phone number
01202 007339



CYG-612 | Date of Preparation: 23/12/24

Please visit cygnetgroup.com for more info | Follow us on social media: